

3.7 NELSON/MARLBOROUGH

3.7.1 Number and Size of Forests

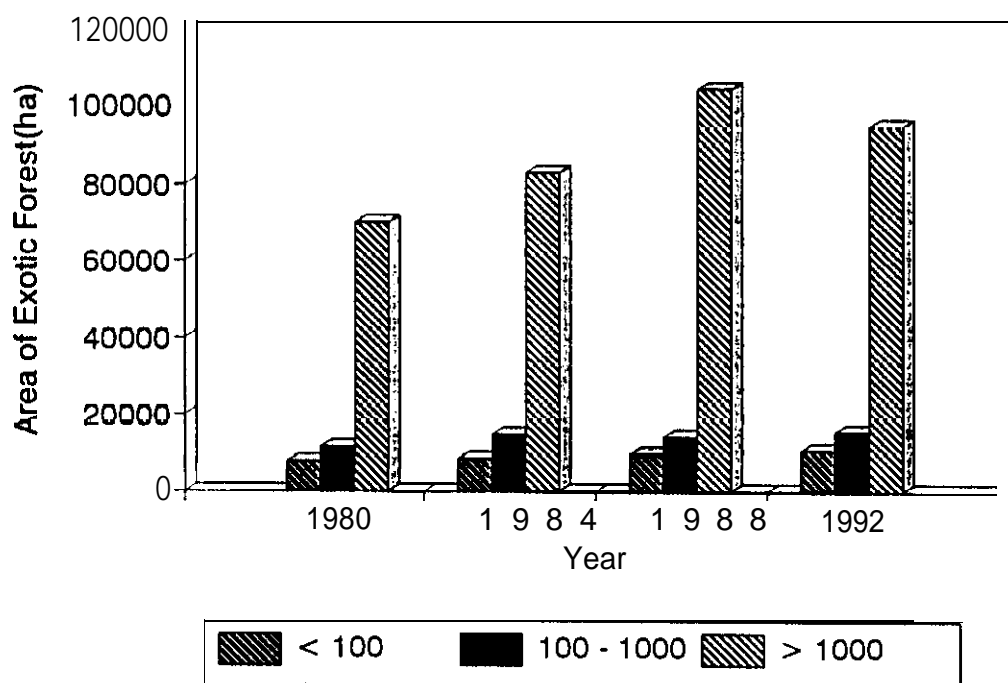
The Nelson/Marlborough wood supply region had 120,000 ha in planted production forest in 1992, being 9% of New Zealand's resource. This represented a 36% increase over the 1980 area compared with a New Zealand increase of 51.8% over the same time period. Following the national trend, 78% of this area is within plantations exceeding 1,000 ha in size (Figure 3.7. 1).

Planted production forests equated to approximately 10% of the land area in the Nelson/Marlborough wood supply region in 1992. Once again, it has not been possible to present comparative ratios of exotic forest to land area over the 1980-1992 period as a result of inconsistencies created by Statistics New Zealand boundary changes. Figure 3.7.2 illustrates well the predominance of planted forest in the Nelson area of this wood supply region. The Nelson/Marlborough planted forest resource is predominantly Radiata pine (88%) and is relatively young in terms of age distribution.

Figure 3.7. 1

Area in Forests by Size of Plantations

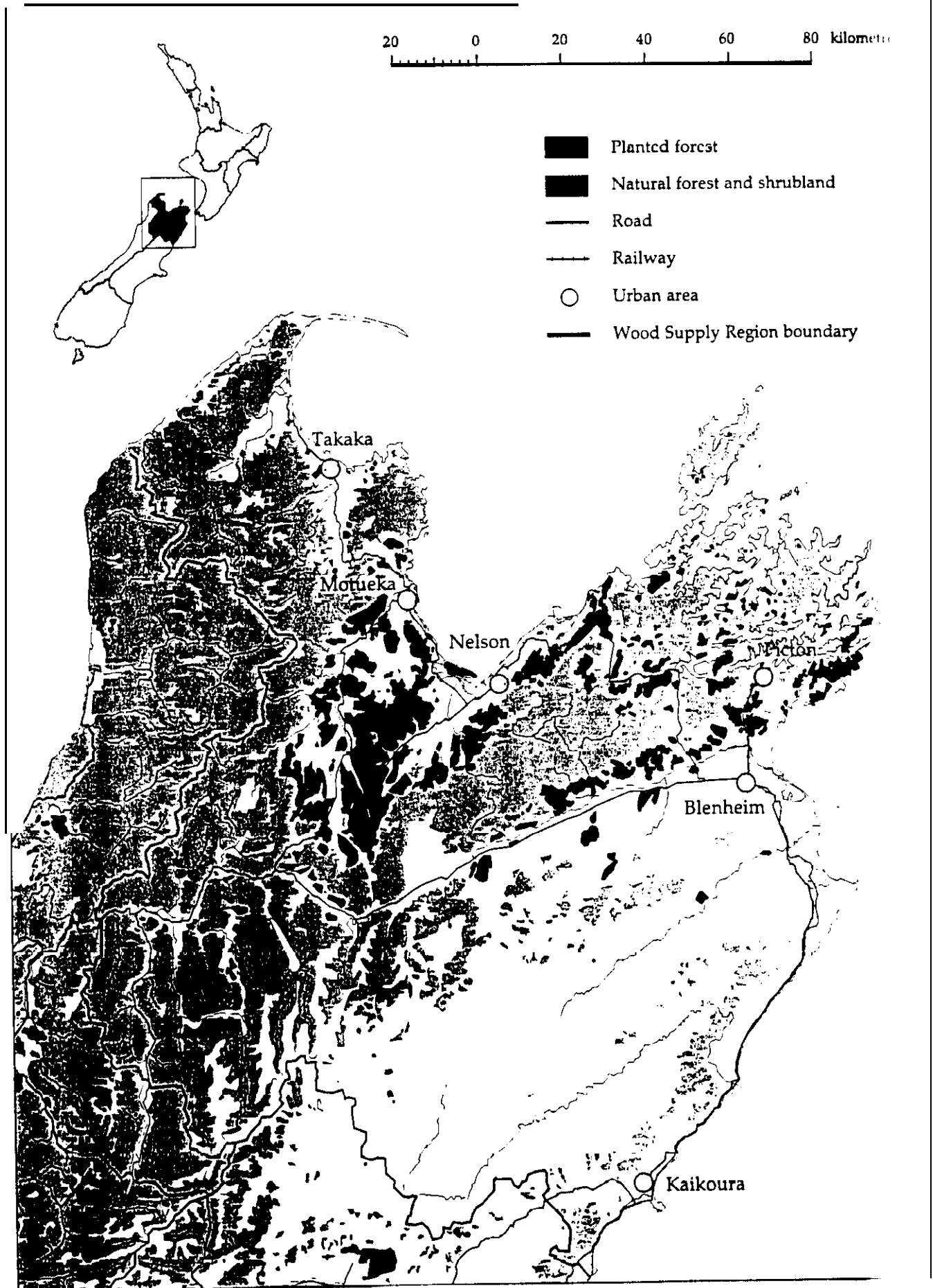
Nelson/Marlborough WSR 1980-1992



Size of Plantation (ha)

Source: Statistics New Zealand

Figure 3.7.2
Nelson/Marlborough Forestry Region



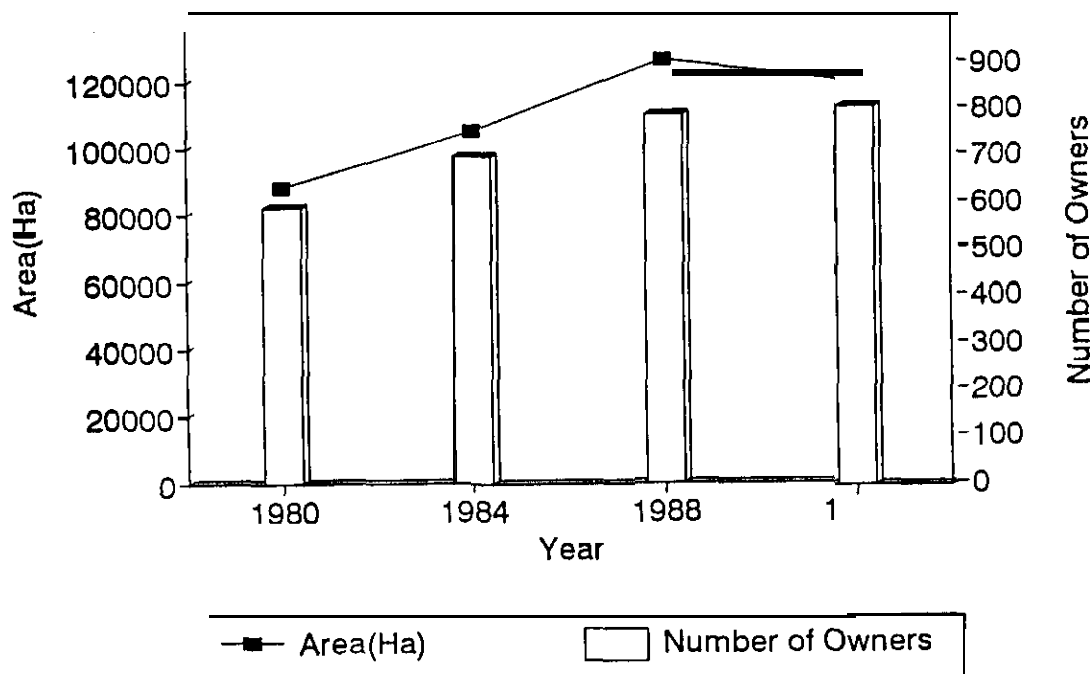
3.7.2 Forest Ownership

Following the national trend, the number of forest owners in Nelson/Madborough increased with the forest area increase between 1980 and 1992 (Figure 3.7. 3). This increase in number of owners was almost entirely in owners of small plantations of less than 100 ha (Figure 3.7.4). The area increase impact of the small plantations was relatively insignificant to forest area in the region as previously discussed (Figure 3.7.1).

Figure 3.7.5 shows that ownership of forestry in 1992 was dominated by private companies after a change in ownership away from the Government between 1988 and 1992. Tasman Forestry (Nelson) Limited acquired Crown forest licences in Nelson and Marlborough and now has a forest estate comprising 74,000 ha. Baigent Forest Industries Limited, a wholly owned subsidiaries of Carter Holt Harvey Limited, has a total forest estate of 28,500 ha in Nelson/Marlborough, 7,500 ha of which are under Crown forestry licence. Rayonier New Zealand limited holds Crown forestry licences to a total of 5,300 ha. Nelson Pine Industries Limited, a wholly owned subsidiary of Sumitomo Forestry Limited of Japan, has 3,400 ha of production forest split between Nelson and Marlborough. Marlborough Forestry Corporation (MFC) has 3,200 ha of planted forest which are managed by Tasman Forestry Limited. Tasman District Council has planted production forest of 2,150 ha and land acquisitions in 1993 are expected to add 600 ha of new land planting for future years. Scolly Forests have approximately 2,500 ha of planted forest (MOF Nelson/Marlborough Regional Study).

Figure 3.7.3

Number of Owners & Area of Plantations Nelson/Marlborough WSR 1980-1992



Source: Statistics New Zealand

Figure 3.7.4

Number of Owners by Size of Plantations Nelson/Marlborough WSR 1980-1992

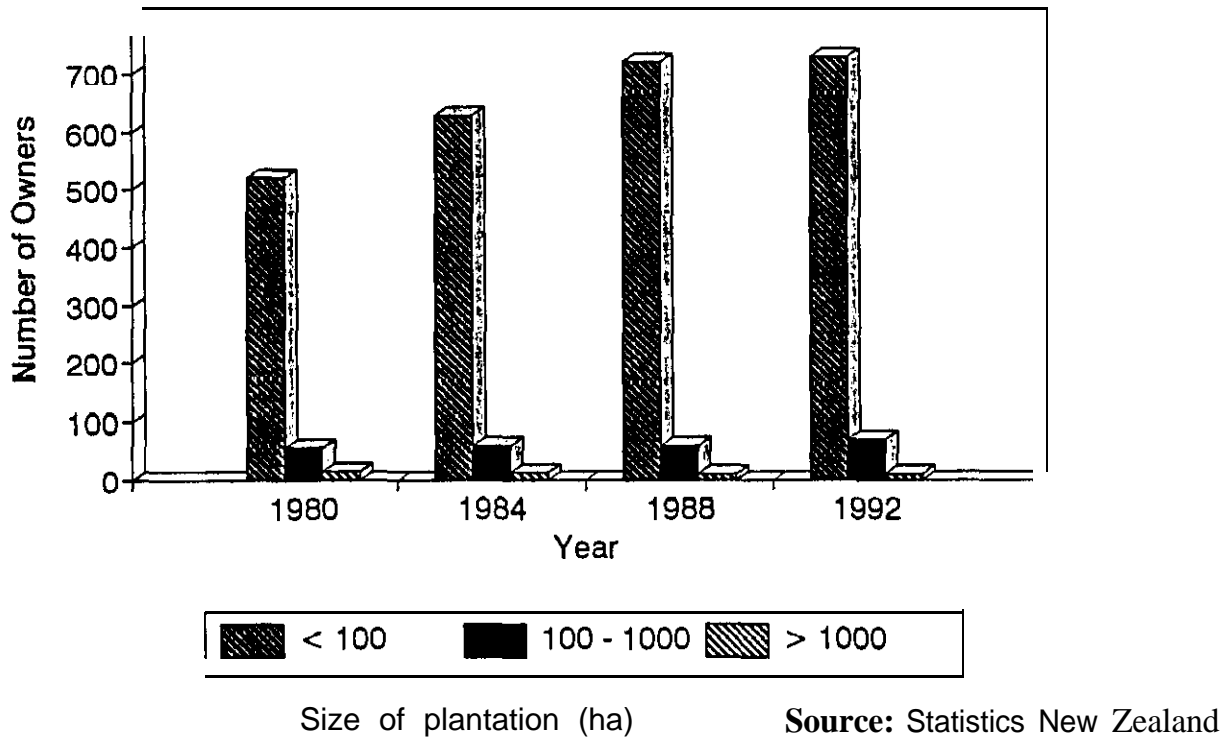
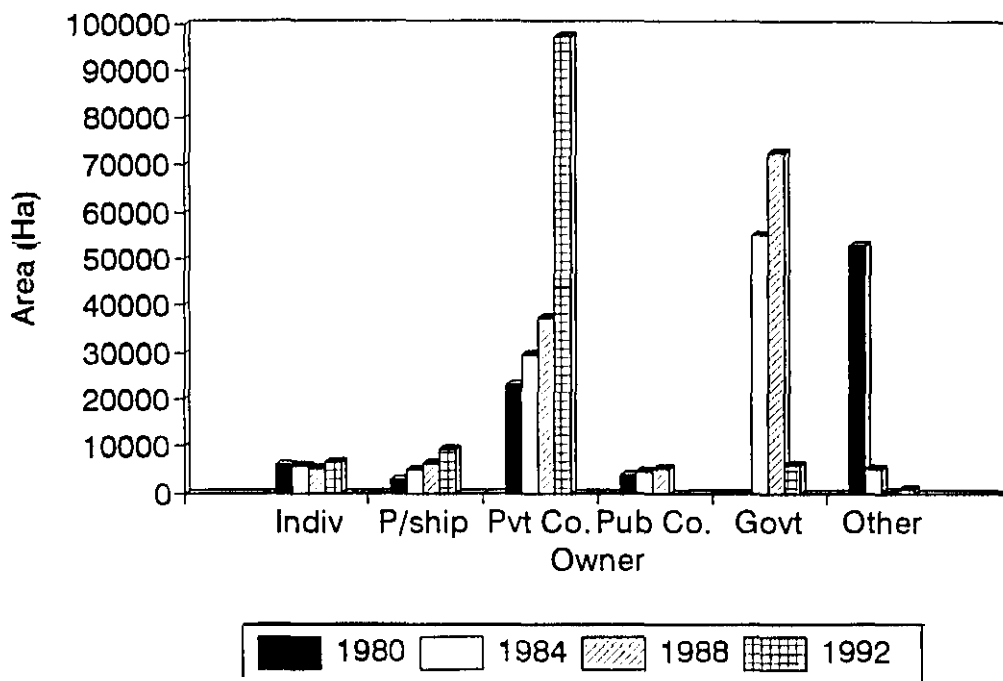


Figure 3.7.5

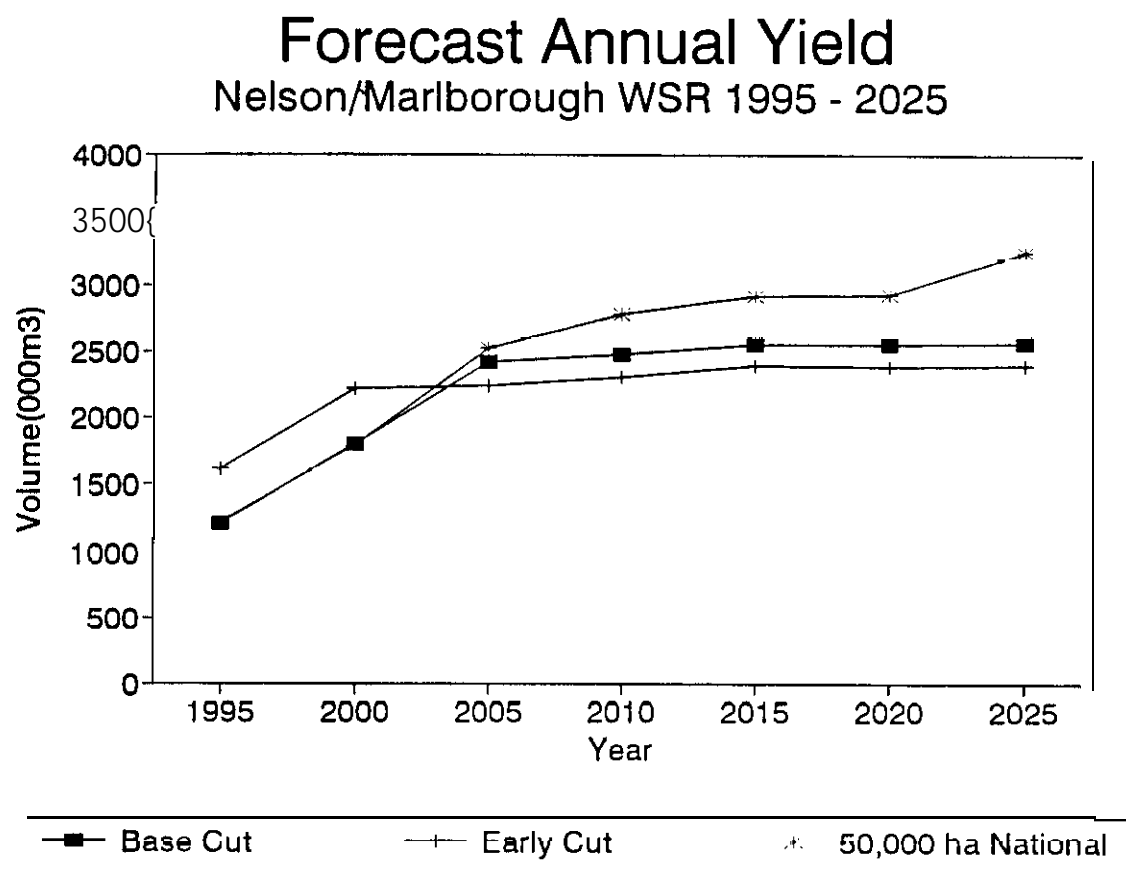
Changes in Ownership Nelson/Marlborough WSR 1980 - 1992



3.7.3 Yield Forecast

Significant increases in harvesting of planted production forests in Nelson/Marlborough have occurred from a level of 480,000 m³ in 1985 to 1,268,700 m³ in the year ended 31 March 1993. Production is expected to nearly double from this 1993 level to 2.4 million m³ after 2000 (on the base cut scenario) (Figure 3.7.6).

Figure 3.7.6



Source: Ministry of Forestry

3.7.4 Employment

Total numbers of activity units and employees have increased in the region between 1988 and 1992. The most significant increases have occurred in services to forestry and logging (Table 3.7. 1). Further increases are expected until 2000 (Figure 3.7.7).

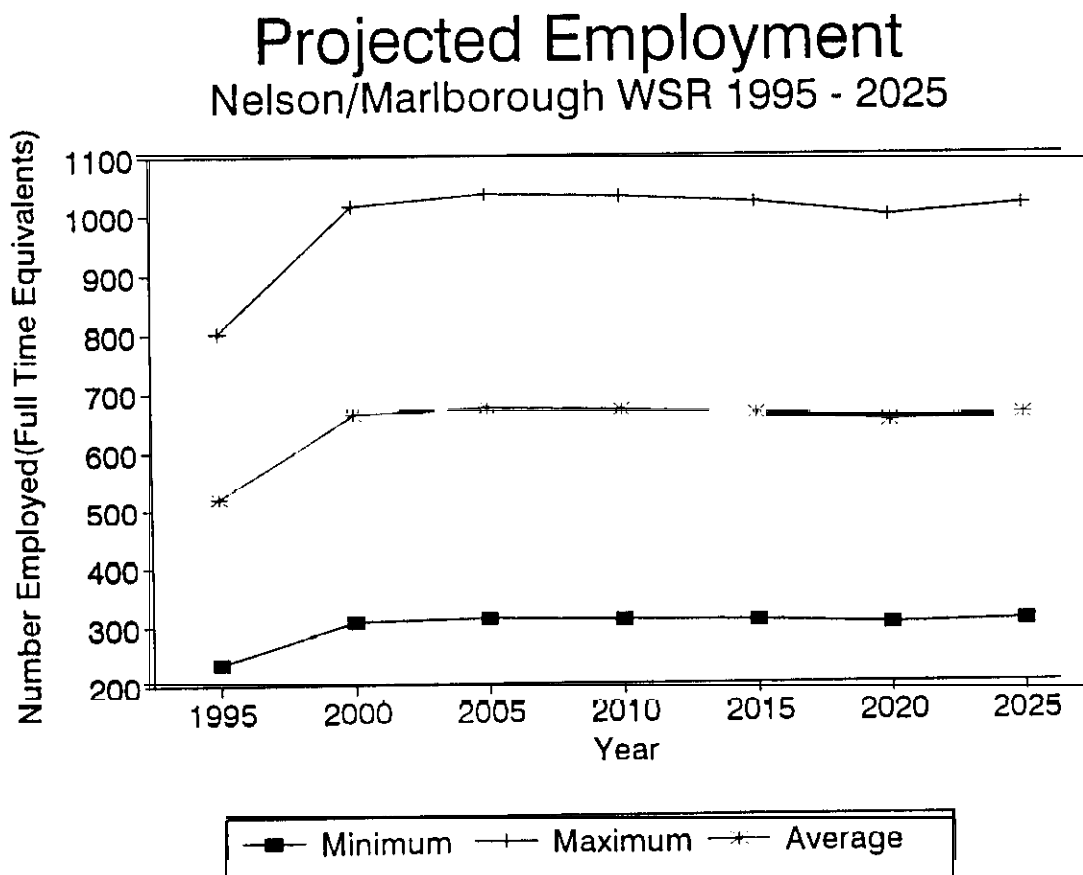
TABLE 3.7.1 Activity Units in the Forestry Related Industry in the Nelson/Marlborough Wood Supply Region

INDUSTRY	1988		1992	
	Activity Units	Employees	Activity Units	Employees
Forestry	58	369	269	296
Services to Forestry	30	81	36	130
Logging	49	236	54	285
Forestry Consultants	3	3	5	7
Totals	140	689	364	718

Source: Statistics New Zealand

Note: Employment in sawmilling and timber processing is not included in the above table.

Figure 3.7.7



Source: Ministry of Forestry

3.7.5 Regional Issues

Roading

Like several other regions in New Zealand, the predicted wood supply increases will mean a significant rise in road transport tonnages. Aldwell and Manly (1992, in the unpublished New Zealand Forest Research Institute Report, "Impacts of Forestry Sector Growth on the Nelson and Marlborough Transport Industry") provide information on the projected wood product supply and transportation demand. This study estimates that the increased log volume harvested will result in an increase in log transport requirements from 65 trucks in 1991 to 109 truck equivalents in 2000.

As in Northland, a potential reading conflict has also been identified between increased logging traffic and the region's heavily travel led tourist routes (Crone: Pers Comm 1993).

Ports and Sea Transport

The Port of Nelson has seen a 50% increase in cargo over the last five years and predicts a further 50 % growth over the next five years. Forest products are predicted to stay at 50% of the total cargo (MOF Nelson/Marlborough Regional Study).

The Nelson Port is actively reclaiming land for log, chip and bark storage and is planning other expansion developments, some of which are proving controversial with Nelson residents (Crone: Pers Comm 1993).

The Marlborough Sounds, a labyrinth of waterways separating islands and peninsulas, contains significant areas of pine forest. The reading network in the Sounds is not of a high standard and a tug and barge service transports logs from forests to either Picton or Havelock for further transport to local mills for processing or log export. Log rafting (where bundled logs are floated in the water) is not permitted because of the danger to water quality standards and its impact on the marine farming industry. In future, barging will be a significant transport mode for the Marlborough forest harvest (MOF Nelson and Marlborough Regional Study).

Wood Processing

The Nelson area has a well-established wood processing infrastructure. The sawmilling industry is dominated by Baigent Forest Industries Limited operating on a two shift basis. The sawmill/chipmill complex was designed to process on a single shift basis 240,000 m³ of logs per year and in April 1990 the second shift began and the mill now has the capacity to process some 400,000 m³ of all log types annually. A large number of small mills operate in Nelson and Marlborough. Nelson Pine Industries Limited operates a medium density fibreboard (MDF) manufacturing plant which has been increasing in size and production over recent years. The plant is now the largest single site producer of MDF in the world with an annual capacity of 220,000 m³. Seven chipping units exist in the region, with all chips being exported to Japan through Port Nelson.